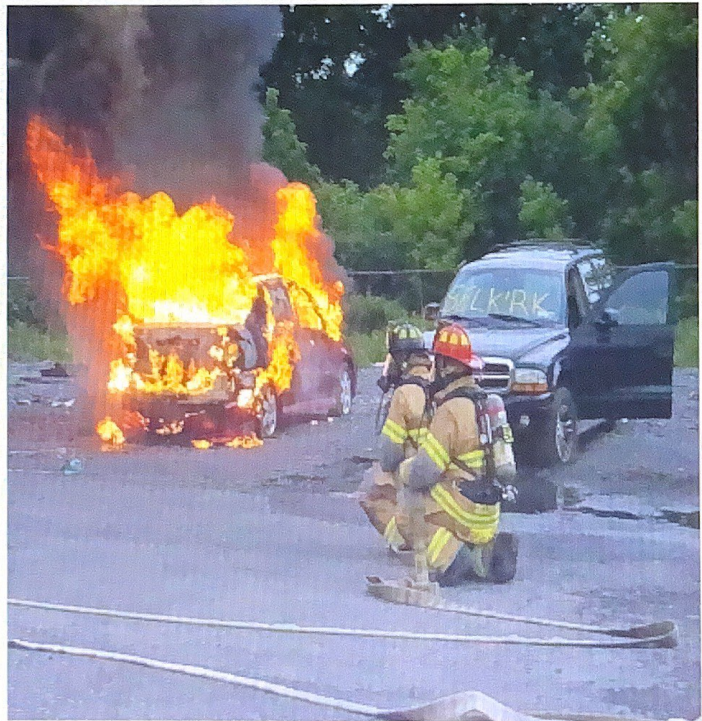


## Selkirk Property Total Assessed Value Change By Year

Year	Total Assessed	Change
2003	\$ 745,543,217	—
2004	\$ 720,188,233	-3.40%
2005	\$ 698,199,322	-3.05%
2006	\$ 690,631,994	-1.08%
2007	\$ 918,971,178	33.06%
2008	\$ 912,067,307	-0.75%
2009	\$ 921,993,463	1.09%
2010	\$ 923,714,356	0.19%
2011	\$ 930,528,836	0.74%
2012	\$ 926,164,415	-0.47%
2013	\$ 1,012,708,413	9.34%
2014	\$ 1,022,303,458	0.95%
2015	\$ 1,070,027,680	4.67%
2016	\$ 1,074,750,521	0.44%
2017	\$ 1,087,810,253	1.22%
2018	\$ 1,053,481,349	-3.16%
2019	\$ 1,078,811,499	2.40%
2020	\$ 1,086,853,250	0.75%
2021	\$ 1,123,853,936	3.40%



Drill Practice – Car Fires